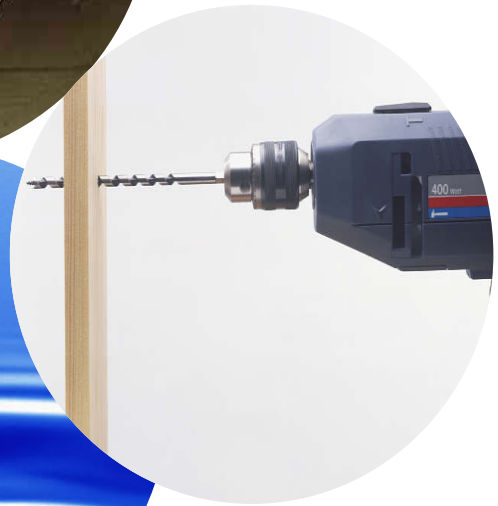


Asbestos

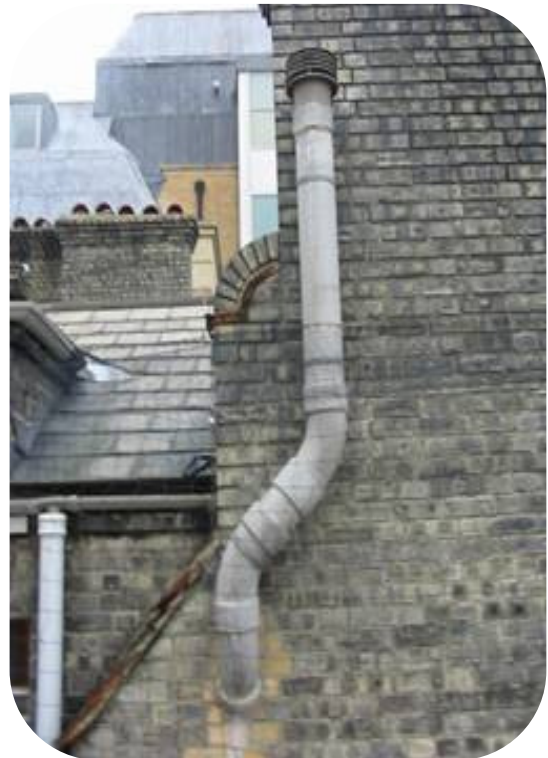


What is Asbestos?

Asbestos materials are made up of asbestos fibres that are strong and resistant to heat and chemicals. In the past these qualities led to asbestos being used in a range of building materials and household products.

Why was asbestos banned?

When asbestos materials age or become damaged, they can release fibres into the air. If these fibres are breathed into the lungs, this could result in asbestos-related diseases.



It is extremely unlikely that the levels of asbestos fibres found in buildings will be harmful. Asbestos does not pose a risk to health if it is undamaged or in a position where it can not be easily disturbed.

Where is asbestos found?

Building material containing asbestos started being used in the early 1900s and were more widely used between the 1960s and 1980s. Houses and flats built or refurbished around that time may contain asbestos.



Asbestos may be found in:

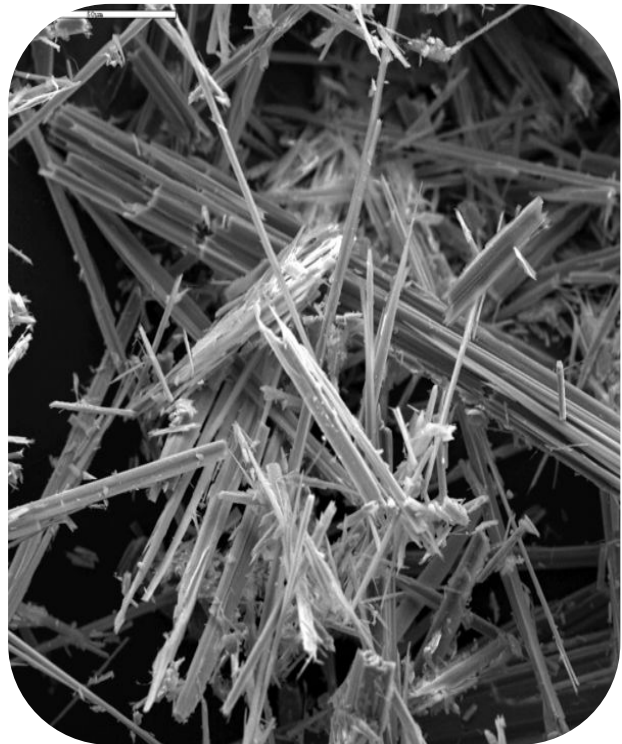
- Insulating boards (such as ducts, infill panels)
- Fire break walls in lofts
- Asbestos lagging (pipe insulation)
- Soffit boards (on the exterior of buildings)
- Older sprayed coatings (e.g. for fire protection of structural steel)
- Asbestos cement products; particularly found as corrugated roofing on garages and sheds
- Older water tanks
- Older fire safety items (particularly older fire blankets)
- Textured paints and plasters
- Roofing materials (roofing felts and tiles)
- Heating appliances (storage heaters)
- Boiler flues
- Some older plastic and vinyl floor tiles (e.g. from the 1960s and 1970s)
- Older ceiling tiles
- Rainwater down pipes (cement from the 1960s and 1970s)



Asbestos was also used in household equipment such as, ironing boards, seals on cooker doors and fire blankets. If you have older items such as these in your home, you are strongly advised to replace them with new or newer items (i.e. items less than 10 years old). Since 1999 the use of asbestos has been banned in the UK.

How can you identify asbestos?

It is not always easy to identify asbestos. One of the main uses for asbestos was for boxing-in (e.g. older bath panels) and for cladding purposes (e.g. shed roofs). It was most widely used in flat or corrugated sheet form and in tube form (for flues). Asbestos may look like a grey, cement-like material. The only way to positively identify whether a material contains asbestos is to have a sample tested in a laboratory.



Who has information on asbestos?



EastendHomes holds records of where any asbestos has been found so far, and where suspected asbestos may be located. We will continue to update these records as more information becomes available and will inform new tenants on letting and existing tenants periodically if the location of any potential asbestos is known.

Asbestos in your home:



What should you do if there is any asbestos in your home?

In the vast majority of cases asbestos found in homes will pose a very low risk. Do not disturb or damage asbestos that is in good condition. As long as it has not cracked, split or flaked, then it is best left alone. If you damage asbestos or suspect damaged asbestos is in your home contact EastendHomes immediately.

Do not attempt to remove asbestos yourself, as this is likely to result in fibres being released into the air. Only specialist contractors should remove asbestos.

These Government-licensed contractors have to follow strict regulations to make sure asbestos is correctly removed.



**Danger
Asbestos zone**



**Respirator
must be worn**

Take care when doing DIY

Never attempt to repair asbestos yourself. Do not saw, sand, scrape or drill holes in asbestos. You are advised to wear a face mask when undertaking DIY.



Contact EastendHomes for advice before you start any DIY works.

Remember.....



- It is older products and material that contain asbestos
- Asbestos is a low risk if in good condition
- Don't damage asbestos
- Don't remove or dispose of asbestos yourself



Asbestos policy statement:

EastendHomes recognises the potential risk associated with asbestos and acknowledges its responsibility (as is reasonably practicable) to reduce the exposure to asbestos of its employees, residents, contractors and other people affected by its activities.

Our policy reflects the DCLG (Department for Communities and Local Government) and Health and Safety Executive's recommendations. The key recommendation is to leave asbestos in position unless it is in an unsatisfactory condition, subject to frequent disturbance, or where it can be removed as part of property repair or improvement. We do not need to remove all asbestos from our properties in the short term. We are continually identifying and recording the locations of asbestos and prioritising its management or removal based on risk assessment.

Get in touch

Mile End Housing Centre

38 Wager Street,
E3 4JE

Email: mileend@eastendhomes.net

Tel: 0208 880 7055

Fax: 0208 880 7810

Holland Housing Centre

35 Commercial Street
E1 6BD

Email: holland@eastendhomes.net

Tel: 0207 456 6700

Fax: 0207 456 6737

St George's Housing Centre

(incorporating Glamis)

61a Swedenborg Gardens
E1 8HP

Email: stgeorges&glamis@eastendhomes.net

Tel: 0207 680 8640 or 0800 028 1587

Fax: 0207 680 8641

Island Gardens Neighbourhood Centre

137 Manchester Road
E14 3DN

Email: islandgardens@eastendhomes.net

Tel: 0207 538 2340

Fax: 0207 537 0512



Language Options and translations

Copies of this document can be made available, on request, in a range of formats including:

Translation (including Bengali, Somali and other community languages)

- Braille
- Large Print
- Audio Tape

To request a different format, please contact your local housing Centre.

Other Leaflets available include:

Rents
Repairs
Customer Care
Estate Services
Anti-Social Behaviour
Lettings Service
and many others

east
end  **HOMES**